



You are not alone.

We're all being asked to stay at home and avoid those outside our homes to contain the spread of novel coronavirus (COVID-19). That can be scary, especially if you think you have symptoms.

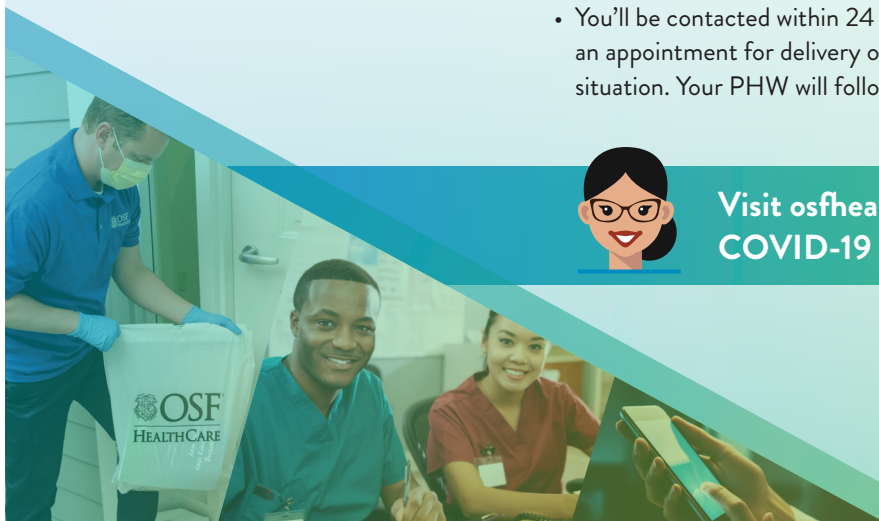
But we want you to know you are not alone. To ensure you get the care you need without leaving your home, OSF HealthCare is offering the Pandemic Health Worker program to provide the care, support and comforting assurance you need.

How to be assigned a Pandemic Health Worker (PHW)

- If you are experiencing symptoms, you must receive an initial screening for COVID-19 using Clare, our digital health assistant, at osfhealthcare.org, or call the COVID-19 Nurse Hotline at 833-OSF-KNOW (833-673-5669).
- Based on that screening, you will receive an invitation from a physician or advanced practice provider to enroll in the PHW program.
- You'll be contacted within 24 hours by a PHW to discuss your needs and make an appointment for delivery of a kit with essential tools to monitor your situation. Your PHW will follow up with you daily over a 14-day period.



Visit osfhealthcare.org to chat with Clare or call the COVID-19 Nurse Hotline at 833-OSF-KNOW.



OSF[®]
HEALTHCARE