



Long Term Care Facilities Personal Protective Equipment Resource Request Guidance

As outbreaks of COVID-19 increase in long term care facilities (LTCF), we understand the urgent need for staff to acquire Personal Protective Equipment (PPE). However, it has come to our attention that some LTCF are reaching out directly to the Illinois Emergency Management Agency (IEMA) warehouse.

IDPH has been asked by IEMA to remind LTCF and others, that there are specific resource request processes (attached) in place to allocate these scarce resources. Reaching out directly to the warehouse confuses the process and can possibly delay the shipment of vital PPE. PPE is being prioritized and allocated to local health departments (LHD), Regional Hospital Coordinating Centers (RHCC) and Emergency Management Agencies (EMA).

It is important that you work closely with your LHD to obtain the PPE that you need for your facility.

Recommendations for PPE requests related to the COVID-19 for LTCF:

1. Long-Term Care Facilities should notify their LHD that PPE is needed.
2. If no resources exist, the LHD will request PPE via the resource request process.

For your reference the “Updated Recommended Guidance for requesting PPE during COVID-19 response” is attached.

Thank you for your cooperation on this matter.

JB Pritzker, Governor

Ngozi O. Ezike, MD, Director

UPDATED Recommended Guidance for requesting PPE during COVID-19 response

This guidance provides updated recommendations for PPE requests related to the COVID-19 response.

1. Hospitals:

- a. **Do not enter PPE requests in IMATS.**
- b. Please refer to Attachment 8 from the Illinois Department of Public Health ESF-8 Plan

2. Local Health Departments:

- a. **Do not enter PPE requests in IMATS.**
- b. Please refer to Attachment 10 from the Illinois Department of Public Health ESF-8 Plan

3. Long-Term Care Facilities:

- a. Notify the LHD that PPE is needed.
- b. If no resources exist, LHD requests via resource request process

4. Healthcare coalition members other than hospitals, LHDs, and LTCs:

- a. Work with the LHD and RHCC and in your region for resource requests.

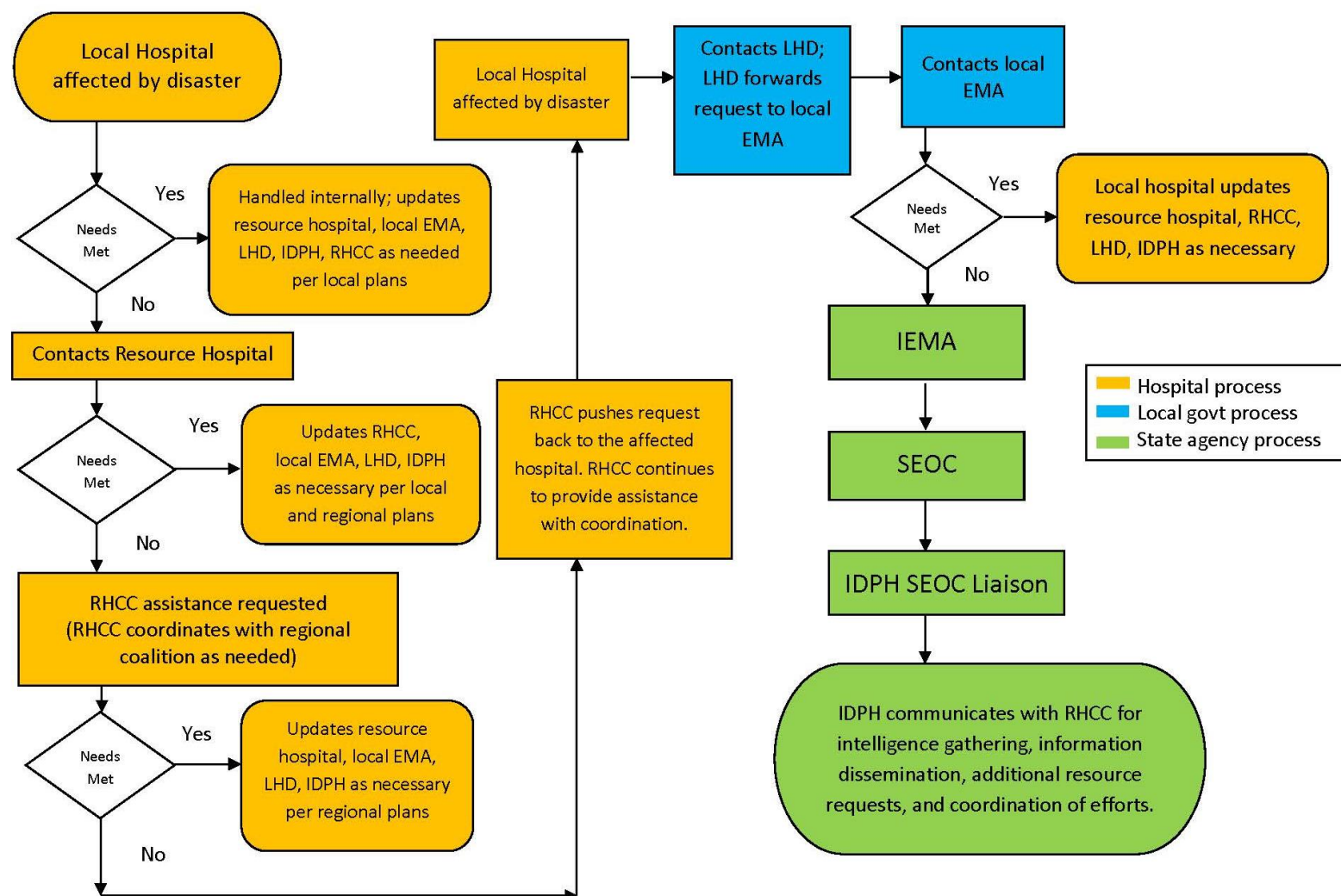
5. Law enforcement, ILEAS, fire, police, all other non-medical first responders:

- a. Notify the local EMA that PPE is needed.
- b. Local EMA requests resources via resource request process

Please continue to attempt procurement of PPE through your local supply chain or vendor.

Attachment 8

Hospital Disaster Resource Request Flowchart (Request for Medical Resources)



Local Health Department Resource Request Flowchart

